

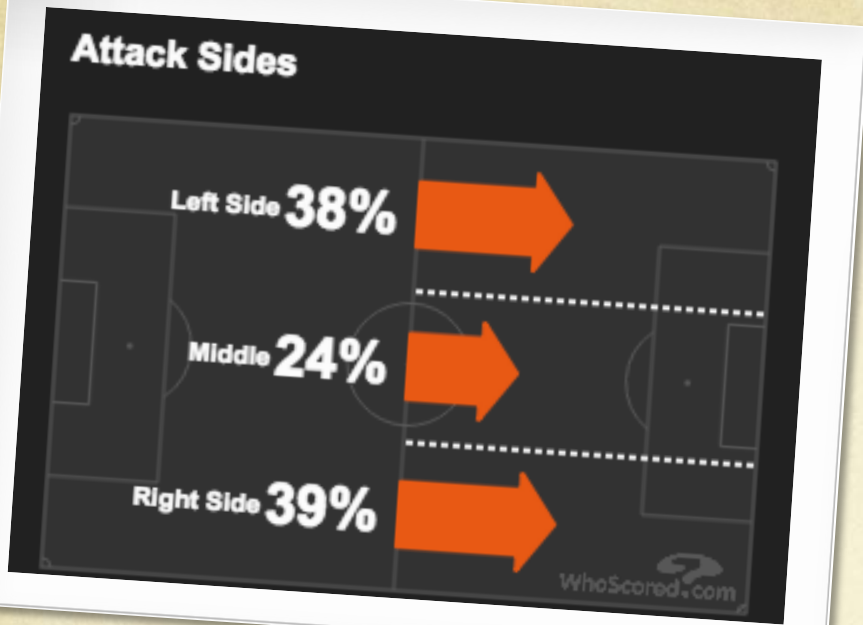
Excelsior Scouting Report

By: Stan Ivanov
July 10, 2018



Excelsior Overview

- Changed the Coach and 4 Key players left (Faik, Mike van Duinen, Milan Massop, Khalid Karami)
- Last Season Played 4-2-3-1 Wide
- Strong in the Air
- Dangerous at set pieces – 16 goals scored (39%)
- Move the Ball to flanks with Long Passes (20% of passes)
- Vulnerable from Long Shots
- Poor Pass accuracy (75% completion)



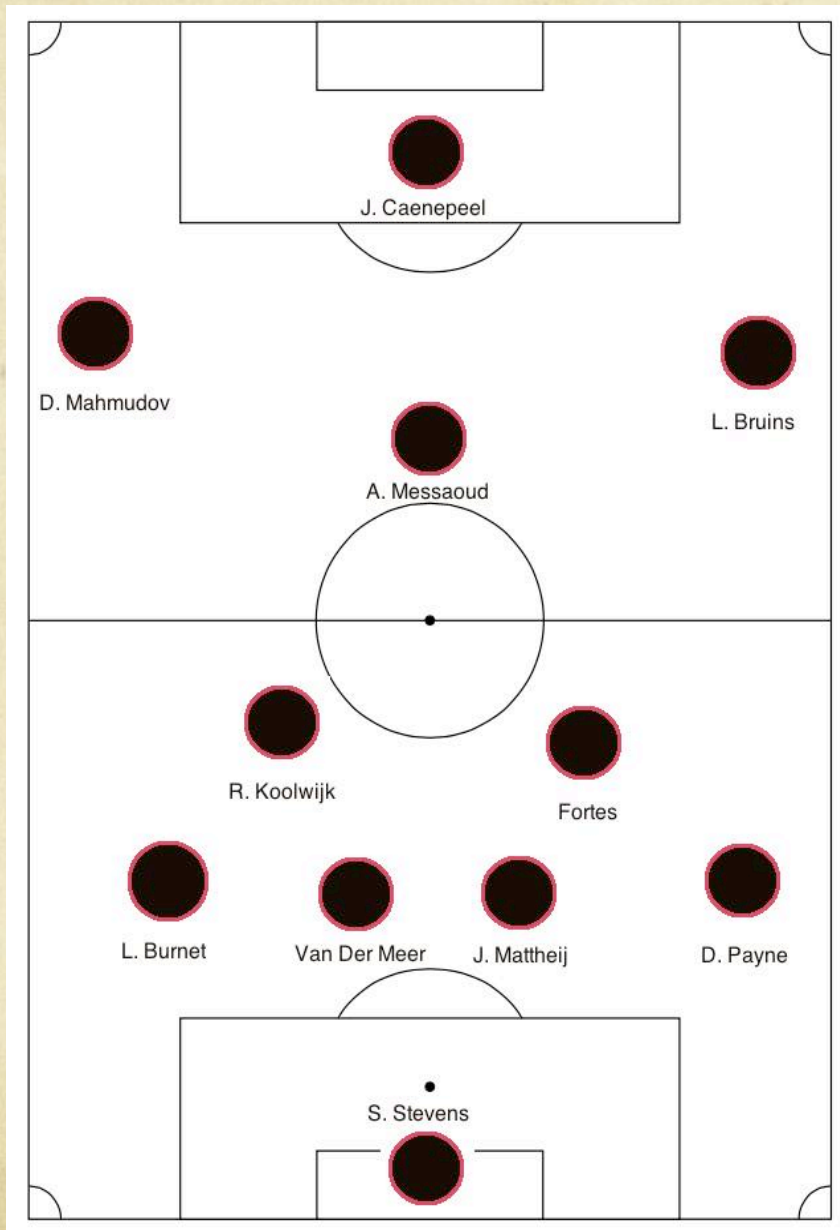
Formation	Times Used
4-2-3-1	27
4-4-2	2
4-3-3	2
4-2-1-3	1
4-4-1-1	1
4-1-4-1	1

Vulnerability

- Position of a Left Back and CB has very little depth. If Robin van der Meer plays CB, Brunet will play LB (169 cm).
- When losing, transition to 4-1-3-2 with Vermeulen playing 2nd forward and removing Defensive Midfielder. Creates Space in the back.
- Two defenders go to the opposition box during set pieces (Mattheij and Faes) vulnerability to fast counter-attacks
- Poor at defending long shots

Probable Lineup

- Team Desperately needs a CF and will likely sign a few new players

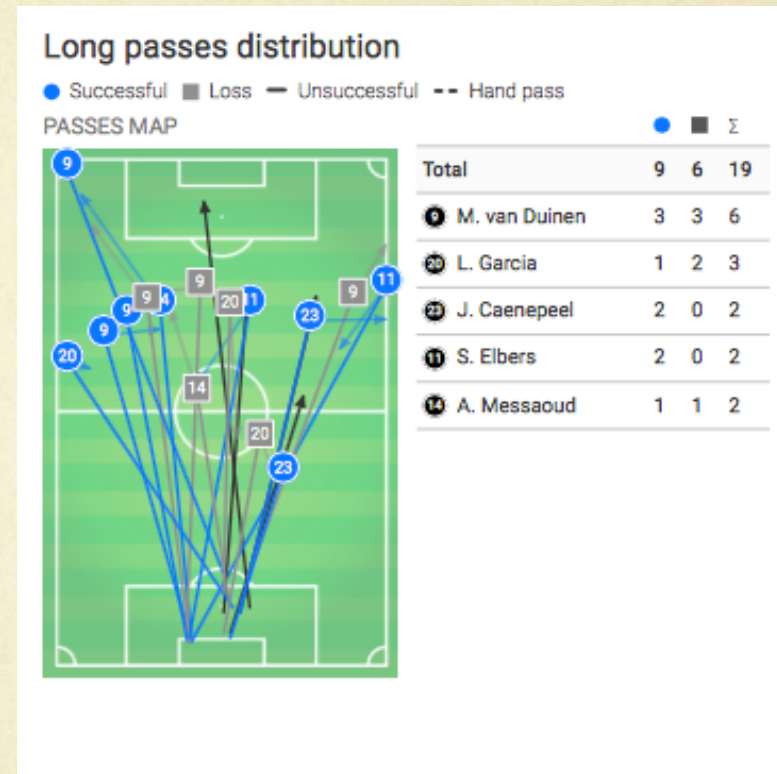


Defensive

- Goal kicks are usually long with a large preference to the right side of the pitch
- When in danger prefer long clearances – 29 clearances per game (Highest in Eredivisie)
- During counter attacks, long balls played to the flanks. Aimed at CF or Bruins who can play both left or right Winger
- Strong and Experienced Mattheij is hard to beat in the air (191 cm). Starts most of the attacks.
- Two main Central Defenders who played last season left the club

Attacking

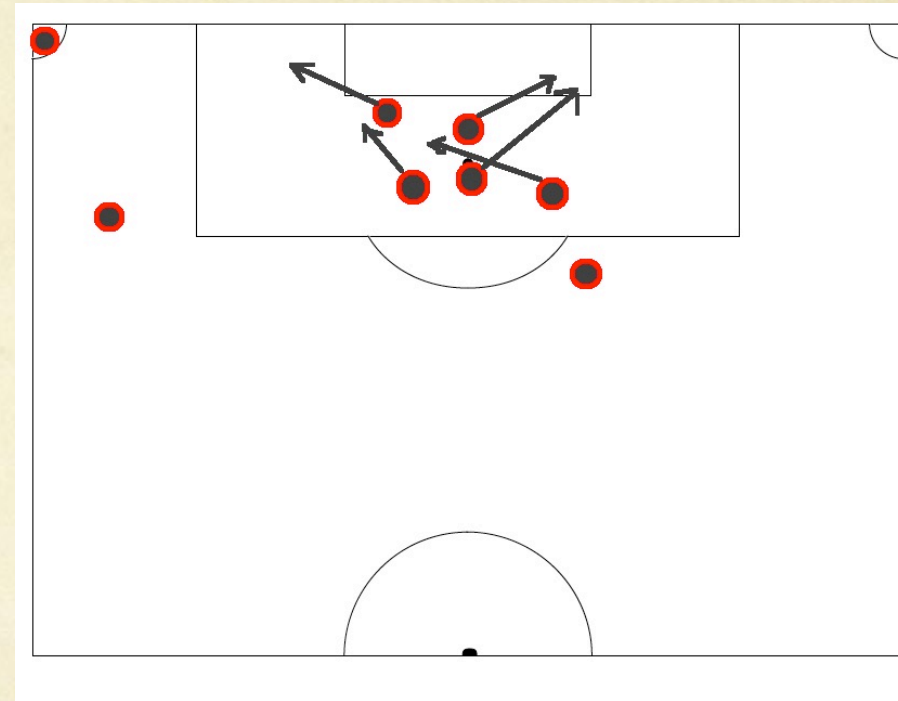
- Long passes and Crosses large part of attacking strategy
- Mattheij averages 8 long passes per game and 54% accurate
- Messaoud plays an advanced Playmaker and prefers to distribute the ball to wingers
- Fortes has upper body strength for long throw ins and ball gets into penalty box. Can be dangerous



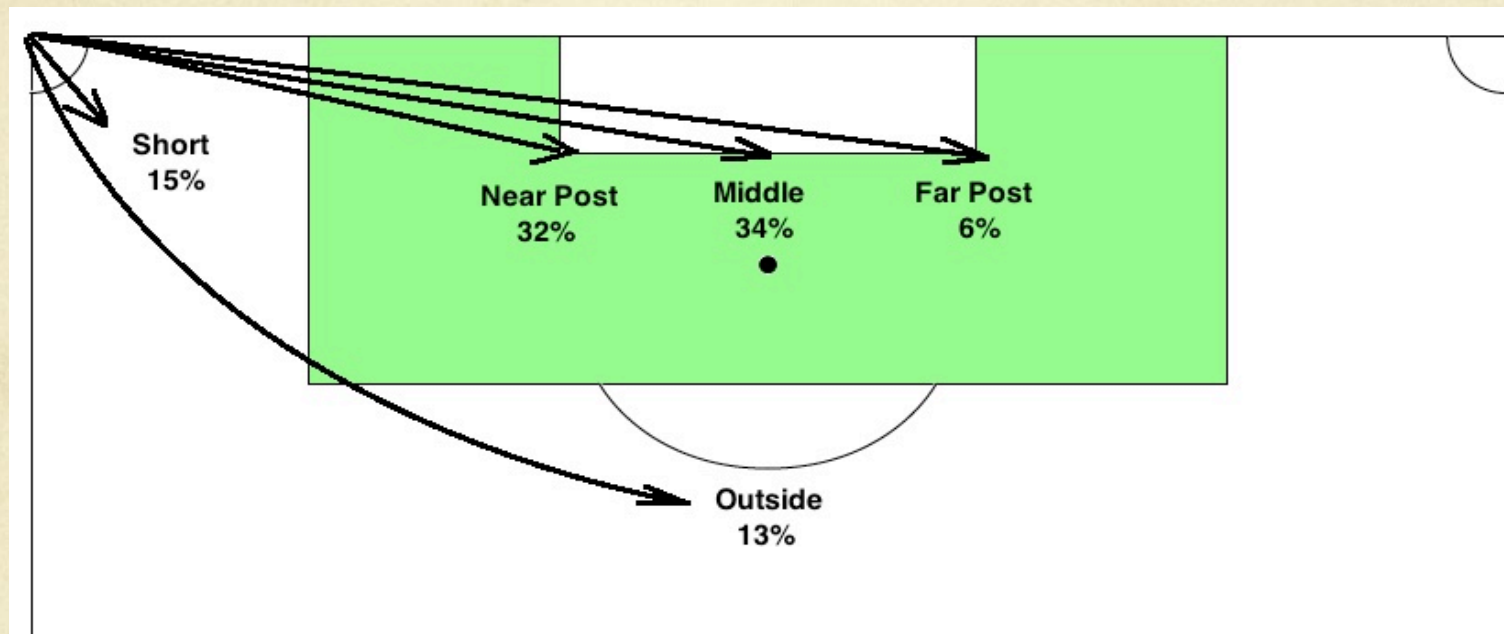
Wyscout Stats from Ajax Game

Corners Attacking

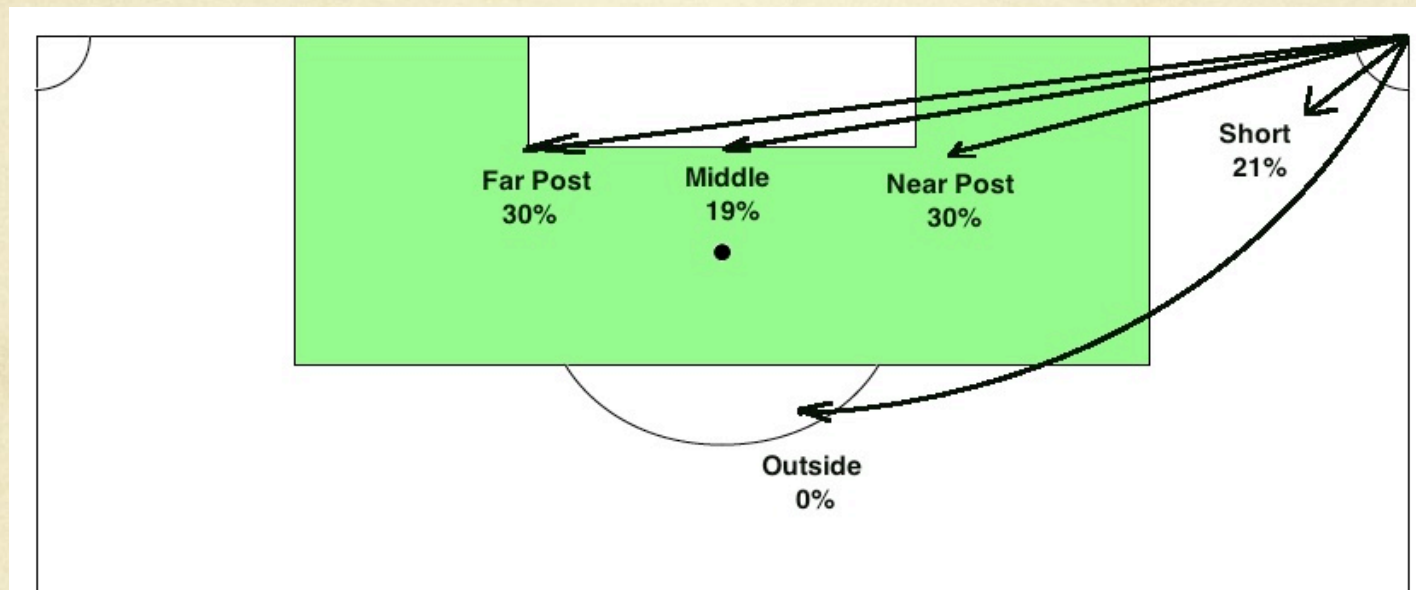
- Analyzed 120+ corners
- Koolwijk or Bruins deliver (both right footed)
- 5 Players in the box and 1 player provides short option and 1 lurking outside the box (see Image)
- Two players attack near post, one goes to the middle and two move to far post
- Try to create space for Mattheij who runs from deep and ends up in the middle. Very dangerous
- Like to play Near Post Flick On



Corners Delivery - Left



Corners Delivery - Right



Penalty Takers



- Luigi Bruins 11 Scored 1 Saved
- Favors Right Bottom



- Mahmudov – 6 Scored
- Favors Right Bottom

